

EVENT GUIDE

Showdown Düsseldorf



Your Showdown GmbH
Königsberger Straße 100
Building A01
40231 Düsseldorf



OVERVIEW

Our event location spans 1,600 m², offering a unique blend of historic charm and modern design. The light-filled rooms across two floors are perfect for corporate events, workshops, or team gatherings, each accommodating up to 250 guests.

The stylish entrance area, with wood paneling and a grand staircase, creates an exclusive atmosphere, while flexible lounge areas and modern touches provide the ideal backdrop for various events.

For smaller meetings, the Green Lounge is an excellent choice, comfortably seating up to 30 people. Its lush green wall creates a calm, inspiring setting, perfect for creative work and meetings.

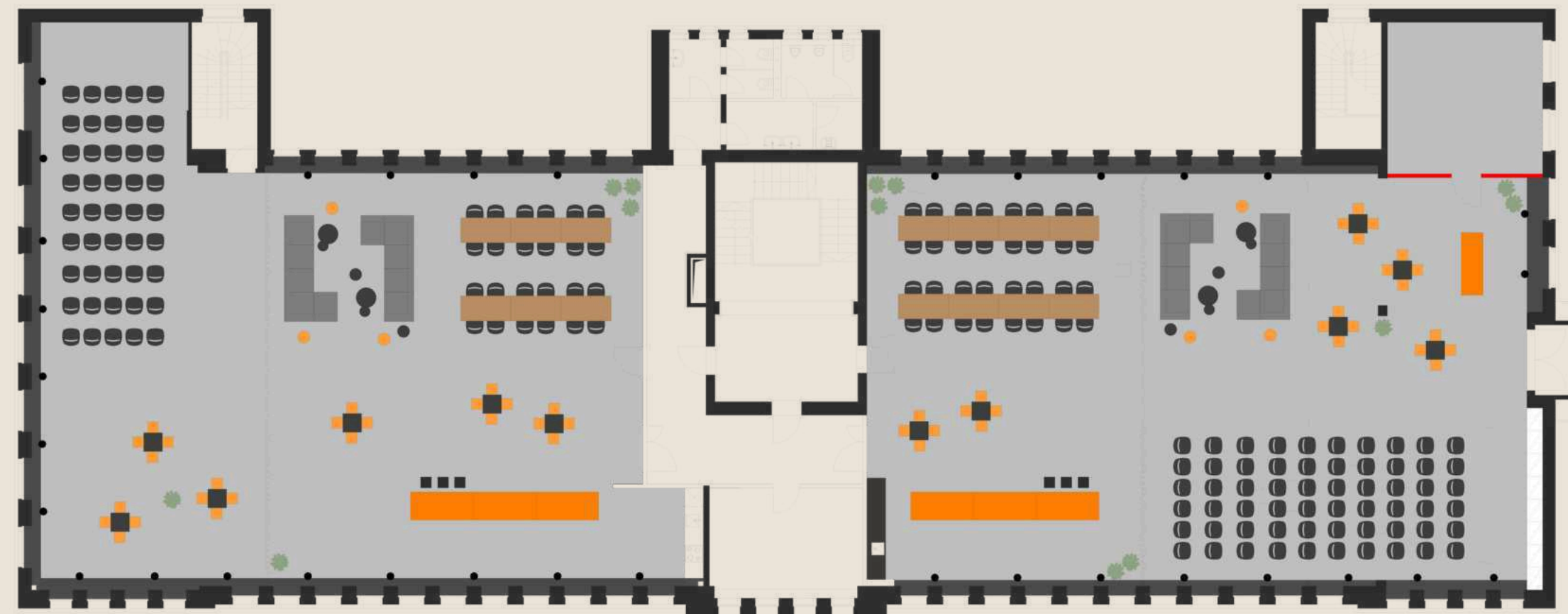


ROOM PLAN - LOUNGES

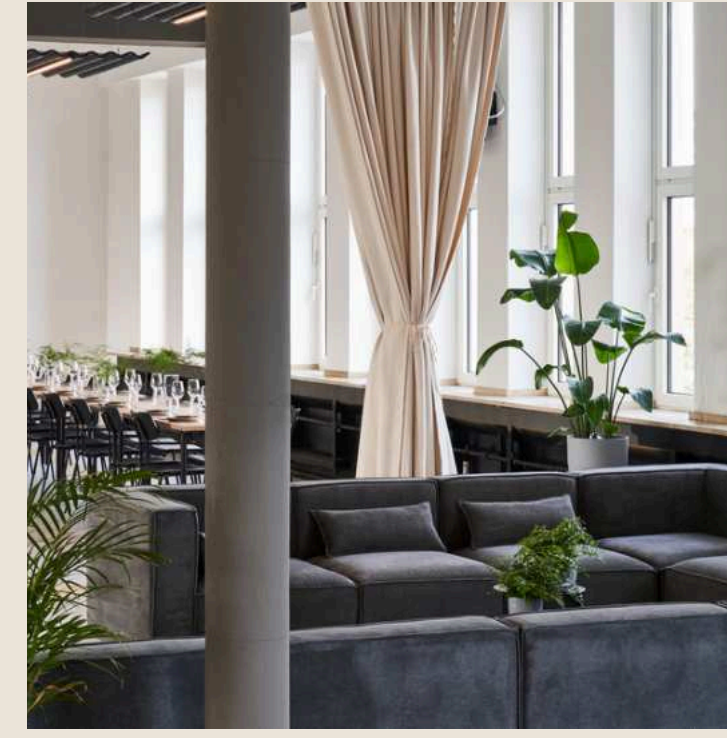
The lounges on the first floor offer 350 m² each of flexible space for a variety of events.

Lounge areas and stylish seating invite guests to relax, while premium bar elements create a laid-back atmosphere.

This makes our spaces ideal for formal events as well as casual get-togethers or networking events. Here, you'll experience events that are not only professional but also cozy and inspiring.



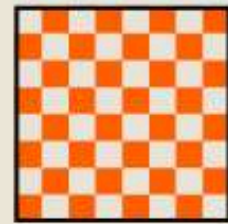
IMPRESSIONS SHOWDOWN LOUNGES



SET-UP OPTIONS

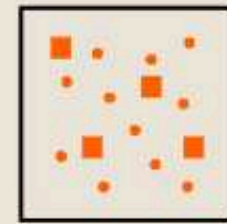
Whether you're looking for classic theater seating for conferences, elegant banquet arrangements for gala dinners, or a relaxed lounge atmosphere for casual evenings, our modular rooms can be customized to accommodate up to 250 people. This ensures the ideal setup for every event.

From training sessions and seminars to festive receptions and lively parties, our flexible seating options cater to every need, ensuring a smooth event experience and complete comfort for your guests.



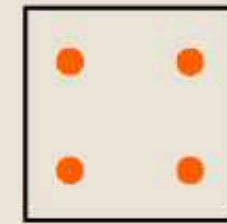
300

Square meter



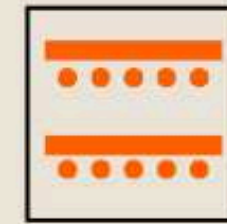
300

Standing



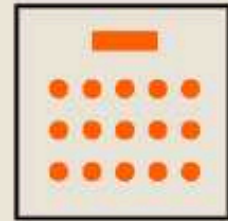
80

Corona compliant



80

Parliament



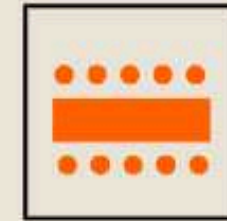
200

Rows



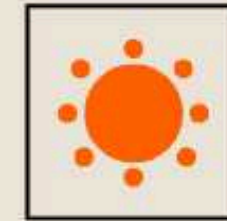
40

U-shape



200

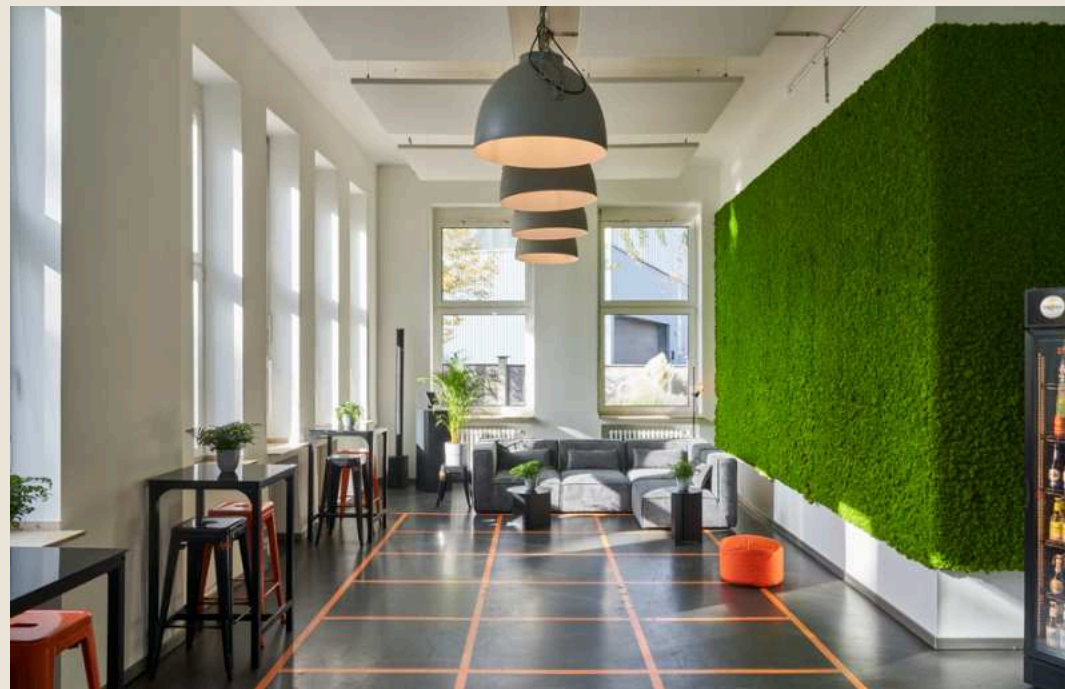
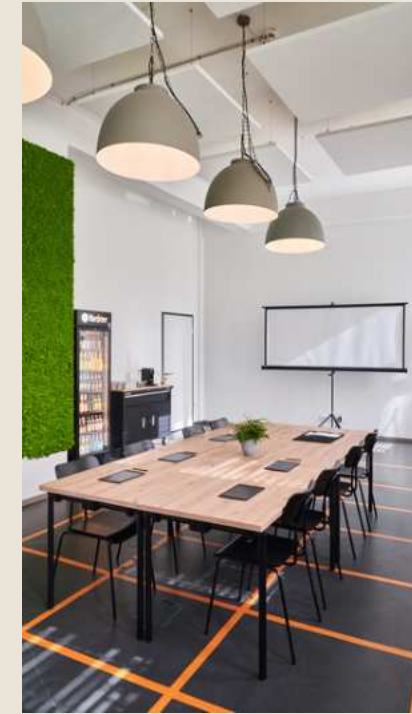
Boards



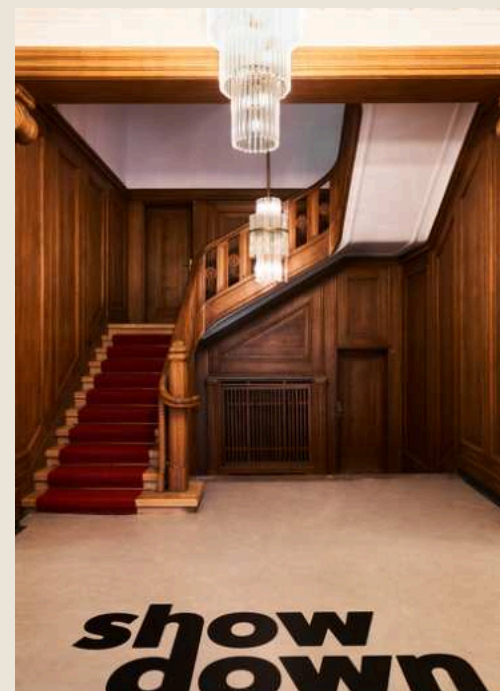
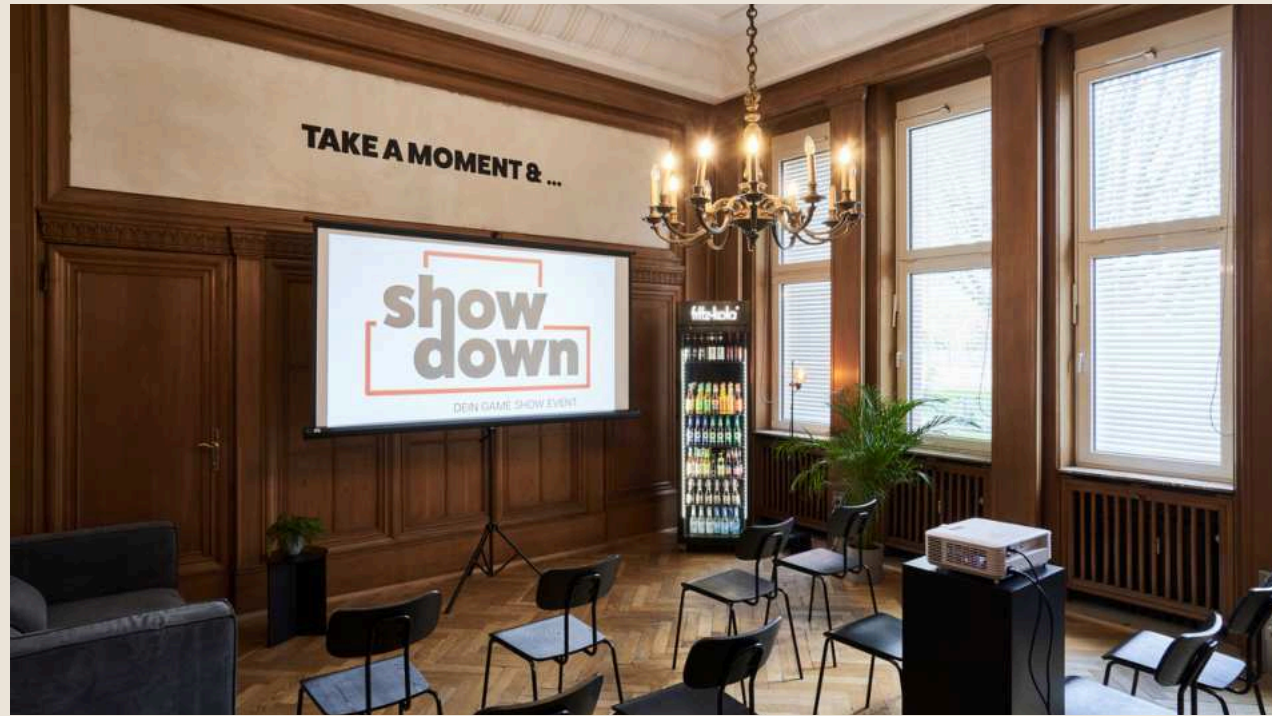
150

Gala/Banquet

IMPRESSIONS GREEN LOUNGE



IMPRESSIONS BIBLIOTHEK AND ENTRANCE



EQUIPMENT

- ✓ Sound system installed on the ceiling
- ✓ Wifi free of charge
- ✓ Bar tables
- ✓ Tables up to 200 PAX
- ✓ Black chairs up to 200 PAX
- ✓ Ambient lighting
- ✓ Moderation technology
- ✓ 2 wireless microphones
- ✓ Professional sound system
- ✓ 2x lounge area
- ✓ All windows can be darkened



TESTIMONIALS



Viktoria Lindner
CEO & Co-Founder



We had an incredibly great afternoon with the entire team. Everyone had a lot of fun, and it was a great opportunity to strengthen team skills together. I highly recommend it as a team event.



Thomas Punzel
Director Account Management DE



Global Savings Group

Team building with a certain “WOW factor.” Aiming to strengthen the cohesion and team spirit in our newly formed sales team, we chose "Your Showdown" and were not disappointed in the slightest! From initial contact to the final event, the communication, organization, and execution were top-notch! The games were fantastic, and everyone participated with full enthusiasm. No negative feedback, just pure excitement. We'd gladly do it again!

FAQ

1. Are there parking spaces at the location?

Directly at our location, there are 15 parking spaces, and additional parking is available on Königsberger Straße. Public transportation is just a 5-minute walk away.

2. Can the lounge be darkened?

Yes, the lounge can easily be darkened. We have blinds or shutters that you can adjust as needed to create the perfect atmosphere for your event.

3. Can individual rooms be booked separately?

Ja, die Lounges sind auch einzeln buchbar.

4. Kann man eine räumliche Trennung vornehmen?

Yes, the lounges can also be booked individually.

5. How fast is your internet?

Our internet is highly reliable, as we are connected to a fiber optic network. The speed is as follows:

Download: 36 Mbps

Upload: 23 Mbps

6. Is there a time limit for our event

No, there are no time restrictions for your event with us. You can use the space for as long as you like, ensuring your event unfolds exactly as you envision. We are flexible and adapt to your needs.

7. Are we allowed to decorate the location and rearrange furniture?

Yes, this is possible upon request and coordination with us.

THANK YOU!

We are happy to answer all your questions!



Your Showdown GmbH
Königsberger Straße 100
Building A01
40231 Düsseldorf

duesseldorf@yourshowdown.com
+49 30 2000 499 20



Max & Phil | Founder